

Hypra® IP 44 - ELV 16 A and LV 16/32/63 A

metal and plastic plugs and sockets

Technical information

IP 44 conforms to BS EN 60529 and IEC 60529
 Icc 10 kA according to BS EN 60309-1 and IEC 60309-1
 Stainless steel external screws - Nickel plated brass contacts
 IK according to BS EN 62262 and IEC 62262 : plastic = IK 09
 metal = IK 10

Wiring tested according to BS EN 60309-1

Type	Current	Conductors size (mm ²)	Conductors type
Surface and panel mounting sockets	ELV 16 A	4 to 10	Rigid
	LV 16 A	1.5 to 4	Rigid
	LV 32 A	2.5 to 10	Rigid
	LV 63 A	6 to 25	Rigid
Straight plugs and mobile sockets	ELV 16 A	4 to 10	Flexible
	LV 16 A	1 to 2.5	Flexible
	LV 32 A	2.5 to 6	Flexible
	LV 63 A	6 to 16	Flexible
Panel appliance inlets	ELV 16 A	4 to 10	Rigid
	LV 16 A	1 to 2.5	Rigid
	LV 32 A	2.5 to 6	Rigid
LV 63 A	6 to 16	Rigid	

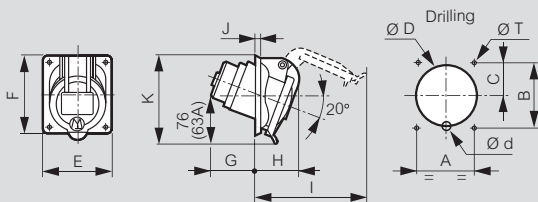
Tightening torque of connection screws

ELV 16 A : from 1 to 1.2 Nm
 LV 16 A : from 0.7 to 1 Nm
 LV 32 A : from 0.7 to 1 Nm
 LV 63 A : from 2 to 2.2 Nm for Phase and Earth
 from 0.7 to 1 Nm for pilot

Dimensions

Panel mounting sockets IP 44

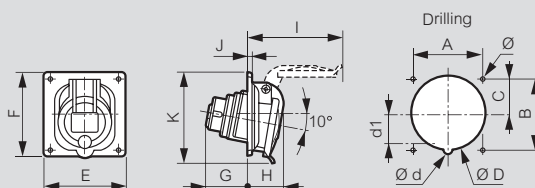
ELV 16 A plastic and LV 16/32/63 A plastic and metal (p. 163-164)



	Material	Weight (kg)	Drilling (mm)						Dimensions (mm)																			
			A	B	C	ØD	Ød	ØT	E	F	G	H	I	J	K													
ELV 16 A																												
2 P	Plastic	0-120	52	60	30	55	-	4-2	64	72	33	47	94	5-5	78-5													
LV 16 A																												
2 P + ⊥	Plastic	0-110	52	60	28	55	14.5	4-2	64	72	41	40	94	5-5	78-5													
	Metal	0-340																										
3 P + ⊥	Plastic	0-140	60	70	31	63.5	14.5	5-2	74	84	44	40	98	5-5	88													
	Metal	0-405																										
3 P + N + ⊥	Plastic	0-165	60	70	33	70.6	-	5-2	80	84	44	44	110	5-5	93													
	Metal	0-450																										
LV 32 A																												
2 P + ⊥	Metal	0-605	70	80	38	76.2	10	5-2	84	94	50	53	120	5-5	103													
3 P + ⊥	Metal	0-605	70	80	38	76.2	10	5-2	84	94	50	53	120	5-5	103													
3 P + N + ⊥	Metal	0-660	70	80	38	76.2	10	5-2	84	94	52	56	124	5-5	107													
LV 63 A																												
3 P + ⊥	Plastic	0-640	77	85	-	92	-	6-5	106	106	98	70	160	6	129													
	Metal	1-000																										
3 P + N + ⊥	Plastic	0-700	77	85	-	92	-	6-5	106	106	98	70	160	6	129													
	Metal	1-200																										

Panel mounting sockets IP 44

LV 16/32 A plastic with modular fixings (p. 163-164)

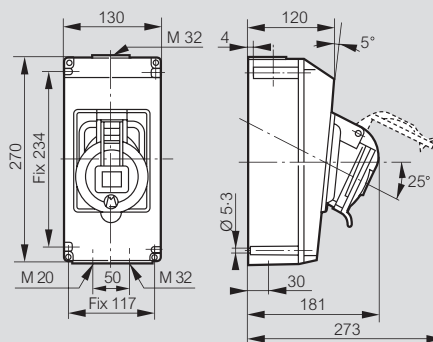


	Weight (kg)	Drilling (mm)						Dimensions (mm)																			
		A	B	C	ØD	Ød	d1	E	F	G	H	I	J	K	Ø												
LV 16 A																											
2 P + ⊥	0-110	70	70	35	76.2	-	-	84	84	37	36	89	4-5	88	4-2												
3 P + ⊥	0-140	70	70	35	76.2	-	-	84	84	43	36	97	4-5	89	4-2												
3 P + N + ⊥	0-165	70	70	35	76.2	-	-	84	84	43	37	106	4-5	91	4-2												
LV 32 A																											
2 P + ⊥	0-220	70	70	35	76.2	-	-	84	94	54	45	117	4-5	100	4-2												
3 P + ⊥	0-220	70	70	35	76.2	-	-	84	94	54	45	117	4-5	100	4-2												
3 P + N + ⊥	0-255	70	70	35	76.2	8	36	84	94	54	46	125	4-5	102	4-2												

Surface mounting sockets IP 44

LV 63 A (p. 164)

Boxes can be rotated to aid entry

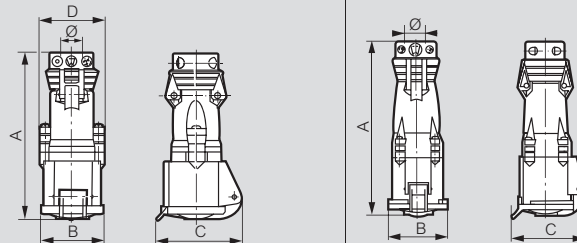


	Material	Weight (kg)
63 A		
3 P + ⊥	Plastic	1-50

Mobile sockets IP 44

ELV 16 A, LV 16/32 A (p. 163-164)

LV 63 A¹ (p. 164)



	Material	Weight (kg)	Dimensions (mm)				Ø Clamping and grip (mm)
			A	B	C	D	
ELV 16 A							
2 P	Plastic	0-190	148	54.5	74	55	8.5 to 22
LV 16 A							
2 P + ⊥	Plastic	0-170	147	54.5	74	55	8 to 15
3 P + ⊥	Plastic	0-200	151	61.5	81	60	8 to 15
3 P + N + ⊥	Plastic	0-245	172	69.5	90	66	10 to 18
LV 32 A							
2 P + ⊥	Plastic	0-300	177	71	93	70.5	10 to 18
3 P + ⊥	Plastic	0-300	177	71	93	70.5	12 to 22
3 P + N + ⊥	Plastic	0-350	183	77.5	100	77	12 to 22
LV 63 A							
3 P + ⊥	Plastic	0-770	273	96	119	-	18.5 to 29
3 P + N + ⊥	Plastic	0-830	273	96	119	-	20.5 to 32

1 : Wiring diagram for 63 A shown on p. 167

Hypra® IP 44 - ELV 16 A and LV 16/32/63 A

metal and plastic plugs and sockets (continued)

Hypra® IP 44 - ELV 16 A and LV 16/32 A

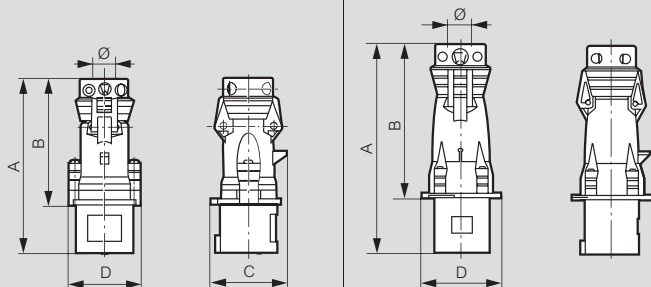
surface mounting back boxes

■ Dimensions (continued)

Straight plugs IP 44

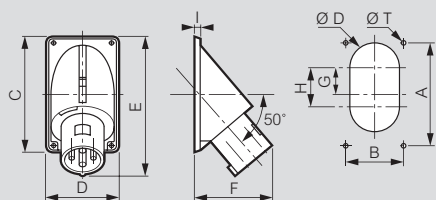
ELV 16 A, LV 16/32 A (p. 163-164)

LV 63 A (p. 164)



	Material	Weight (kg)	Dimensions (mm)				Ø Clamping and grip (mm)
			A	B	C	D	
ELV 16 A							
2 P + ⊥	Plastic	0-180	142	107	62	55	8-5 to 22
LV 16 A							
2 P + ⊥	Plastic	0-150	135	100	57	55	8 to 15
3 P + ⊥	Plastic	0-175	139	103	65	60	8 to 15
3 P + N + ⊥	Plastic	0-210	154	118	73	66	10 to 18
LV 32 A							
2 P + ⊥	Plastic	0-260	164	119	78	70-5	10 to 18
3 P + ⊥	Plastic	0-260	164	119	78	70-5	12 to 22
3 P + N + ⊥	Plastic	0-300	170	125	86	77	12 to 22
LV 63 A							
3 P + ⊥	Plastic	0-640	255	188-5	-	102	18-5 to 29
3 P + N + ⊥	Plastic	0-700	255	188-5	-	102	20-5 to 32

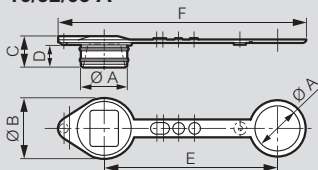
Panel appliance inlets IP 44¹ (p. 163-164)



	Material	Weight (kg)	Drilling (mm)				Dimensions (mm)						
			A	B	ØT	ØD	G	H	C	D	E	F	I
LV 16 A													
2 P + ⊥	Plastic	0-140	94	62	4-5	40	-	-	104	72	121	78	6
3 P + ⊥	Plastic	0-160	109	83	4-5	40	-	-	120	94	135	86	6
3 P + N + ⊥	Plastic	0-190	109	83	4-5	40	-	-	120	94	139	86	6
LV 32 A													
2 P + ⊥	Plastic	0-280	149	90	5-5	40	-	-	160	101	176	111	6
3 P + ⊥	Plastic	0-280	149	90	5-5	40	-	-	160	101	176	111	6
3 P + N + ⊥	Plastic	0-320	149	90	5-5	40	-	-	160	101	174	108	6
LV 63 A													
3 P + ⊥	Plastic	0-630	163	93	6-5	80	42	62	183	113	221	120	8
3 P + N + ⊥	Plastic	0-690	163	93	6-5	80	42	62	183	113	221	120	8

Appliance inlet covers (p. 163-164)

16/32/63 A



Cat. Nos.	Product	Ø A (mm)	Ø B (mm)	C (mm)	D (mm)	E (mm)	F (mm)
0521 25	16 A - 2 P + ⊥	38	50	26	18	140	200
0521 26	16 A - 3 P + ⊥	43	55	26	18	150	215
0521 27	16 A - 3 P + N + ⊥ 32 A - 2 P + ⊥, 3 P + ⊥	50	62	26	18	160	232
0527 99	32 A - 3 P + N + ⊥	56	68	26	18	167	248
0536 99	63 A - 3 P + ⊥, 3 P + N + ⊥	62	74	26	18	205	290

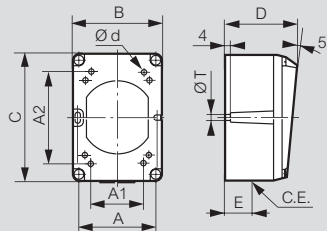
1 : Wiring diagram for 63 A shown on p. 167

■ Dimensions

Reversible boxes for surface mounting sockets

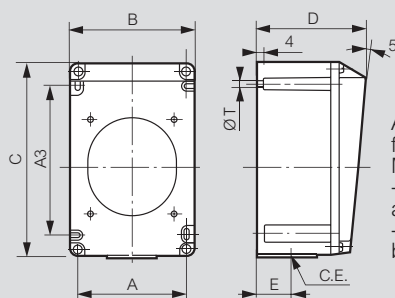
Boxes can be rotated to aid entry

ELV 16 A, LV 16 A (p. 163)



A1 and A2 : optional blind fixing points
Metal boxes are equipped with :
- 2 internal linked earth terminals
and 1 external earth terminal
- 1 tulip earth pin connection
between base and cover

LV 32 A (p. 164)



A1 and A2 : optional blind fixing points
Metal boxes are equipped with :
- 2 internal linked earth terminals
and 1 external earth terminal
- 1 tulip earth pin connection
between base and cover

Back boxes → Panel mounting sockets ↓	Material	Weight (kg)	Fixings (mm)				Dimensions (mm)					C.E.	
			A1	A2	Ød	A	A3	ØT	B	C	D	E	
ELV 16 A/32 A													
2 P	Plastic	0-115	51	68	4-2	64	-	5-3	74	106	58	20	M25
LV 16 A													
2 P + ⊥	Plastic	0-115	51	68	4-2	64	-	5-3	74	106	58	20	M20
3 P + ⊥	Plastic	0-160	68	68	4-2	85	-	5-3	96	122	60	22	M20
	Metal	0-520											
3 P + N + ⊥	Plastic	0-160	68	68	4-2	85	-	5-3	96	122	60	22	M20
	Metal	0-520											
LV 32 A													
2 P + ⊥	Plastic	0-340	-	-	-	90	125	5-3	102	162	90	26	M25
	Metal	0-910											
3 P + ⊥	Plastic	0-340	-	-	-	90	125	5-3	102	162	90	26	M25
	Metal	0-910											
3 P + N + ⊥	Plastic	0-340	-	-	-	90	125	5-3	102	162	90	26	M25
	Metal	0-910											

Hypra® IP 44 - LV 16/32 A

through entry surface mounting boxes

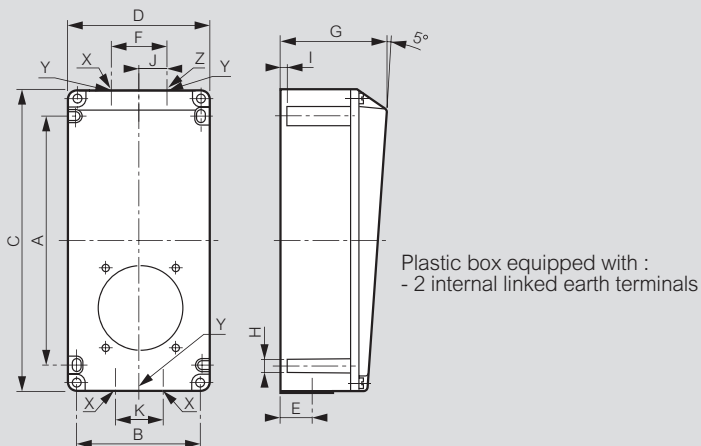
Technical information

IK 09 (plastic) according to BS EN 62262 and IEC 62262
 Contacts : nickel plated brass with stainless steel connection pins

Dimensions

Reversible boxes for surface mounting

LV 16 to 32 A (p. 163-164)



Back boxes → Panel mounting sockets ↓	Material	Weight (kg)	Fixings (mm)			Dimensions (mm)												
			A	B	H	C	D	E	F	G	I	J	K	X	Y	Z		
16 A																		
2 P + ⊕	Plastic	0.330	145	74	5.3	182	86	22	34	75	4	-	-	-	M20	-		
3 P + ⊕	Plastic	0.330	145	74	5.3	182	86	22	34	75	4	-	-	-	M20	-		
3 P + N + ⊕	Plastic	0.330	145	74	5.3	182	86	22	34	75	4	-	-	-	M20	-		
32 A																		
2 P + ⊕	Plastic	0.670	234	117	5.3	270	130	30	50	110	4	-	-	-	M25	-		
3 P + ⊕	Plastic	0.670	234	117	5.3	270	130	30	50	110	4	-	-	-	M25	-		
3 P + N + ⊕	Plastic	0.670	234	117	5.3	270	130	30	50	110	4	-	-	-	M25	-		

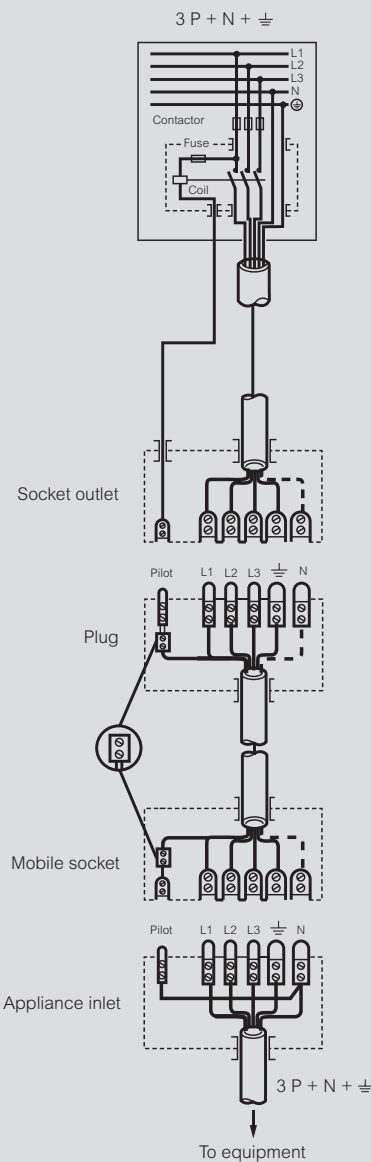
Note : Through entry boxes provide extra wiring space but not looping terminals

Hypra® IP 44 - LV 63 A

pilot pin connection

Example of 63 A 3 P + ⊕ and 3 P + N + ⊕ pilot pin connection

The pilot pin enables the load to be removed prior to the separation of the phase pins, when the circuit is routed via a contactor



The pilot pin connection accepts 2.5-6 mm² flexible or up to 10 mm² rigid conductor. It is the small centre pin in the connection

Pilot cabling

	63 A	Conductors type
Plugs and mobile sockets	2.5 to 6	Flexible
Surface and panel mounting sockets	2.5 to 10	Rigid